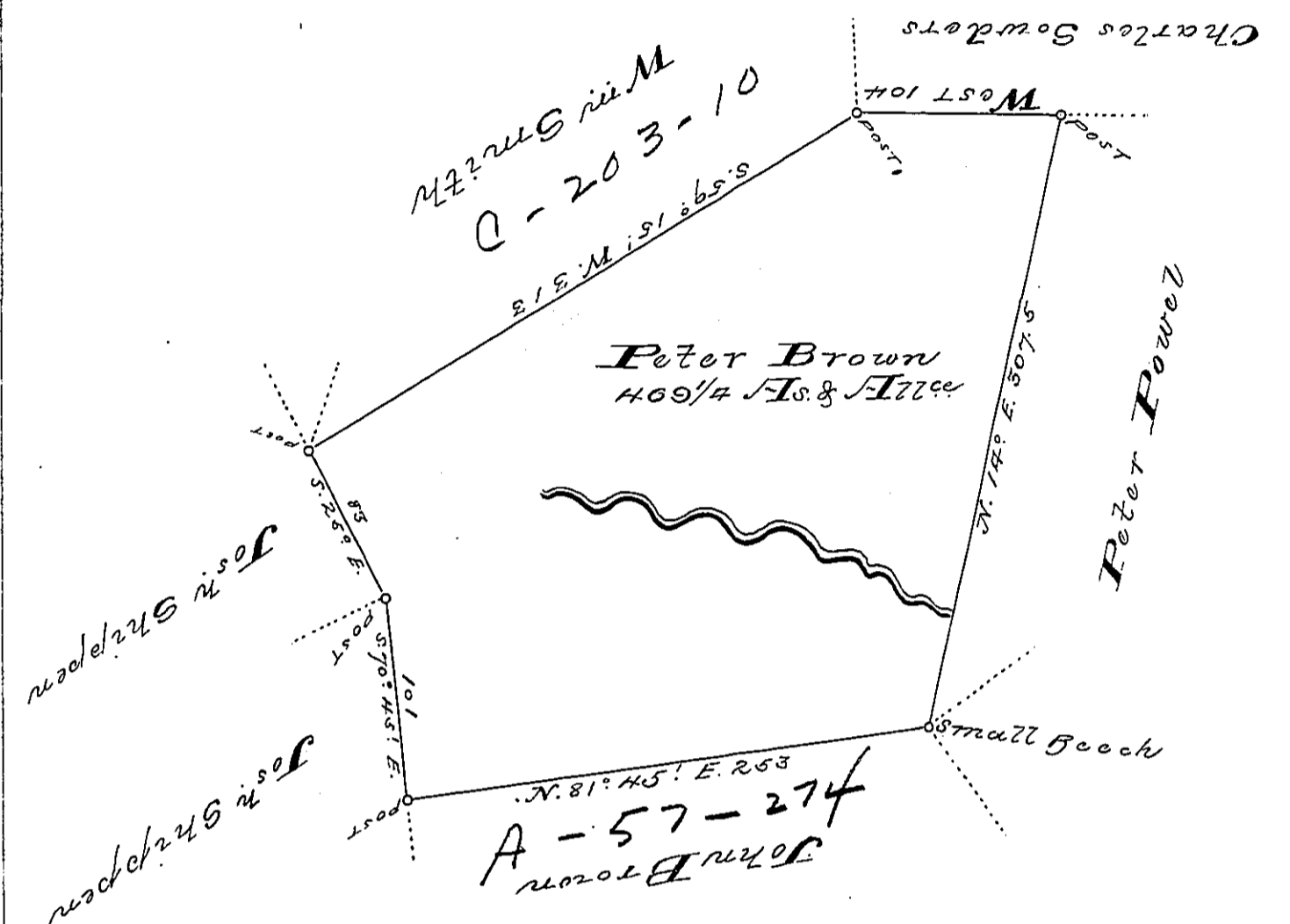


C-203-109



Draught of a tract of land called
 Situated joining Land Surv^d for Wm Smith &
 others in Luzerne (formerly Northum^d.) County
 containing four hundred & sixty nine acres $\frac{1}{2}$ &
 allow^e of 100 Cent for roads &c.

Surveyed for Peter Brown the 7th Day of August
 1784 in Pursuance of a Warrant Dated the
 6th Day of July 1784

To
 John Lukens Esq^r } by Wm Gray D.S.
 Surv^r Genl.

IN TESTIMONY that the above is a copy of the original remaining on file in the
 Department of Internal Affairs of Pennsylvania, made con-
 formably to an Act of Assembly approved the 16th day of
 February, 1833, I have hereunto set my Hand and caused
 the Seal of said Department to be affixed at Harrisburg, this

eleventh day of February 1892

Wm Stewart
 Secretary of Internal Affairs